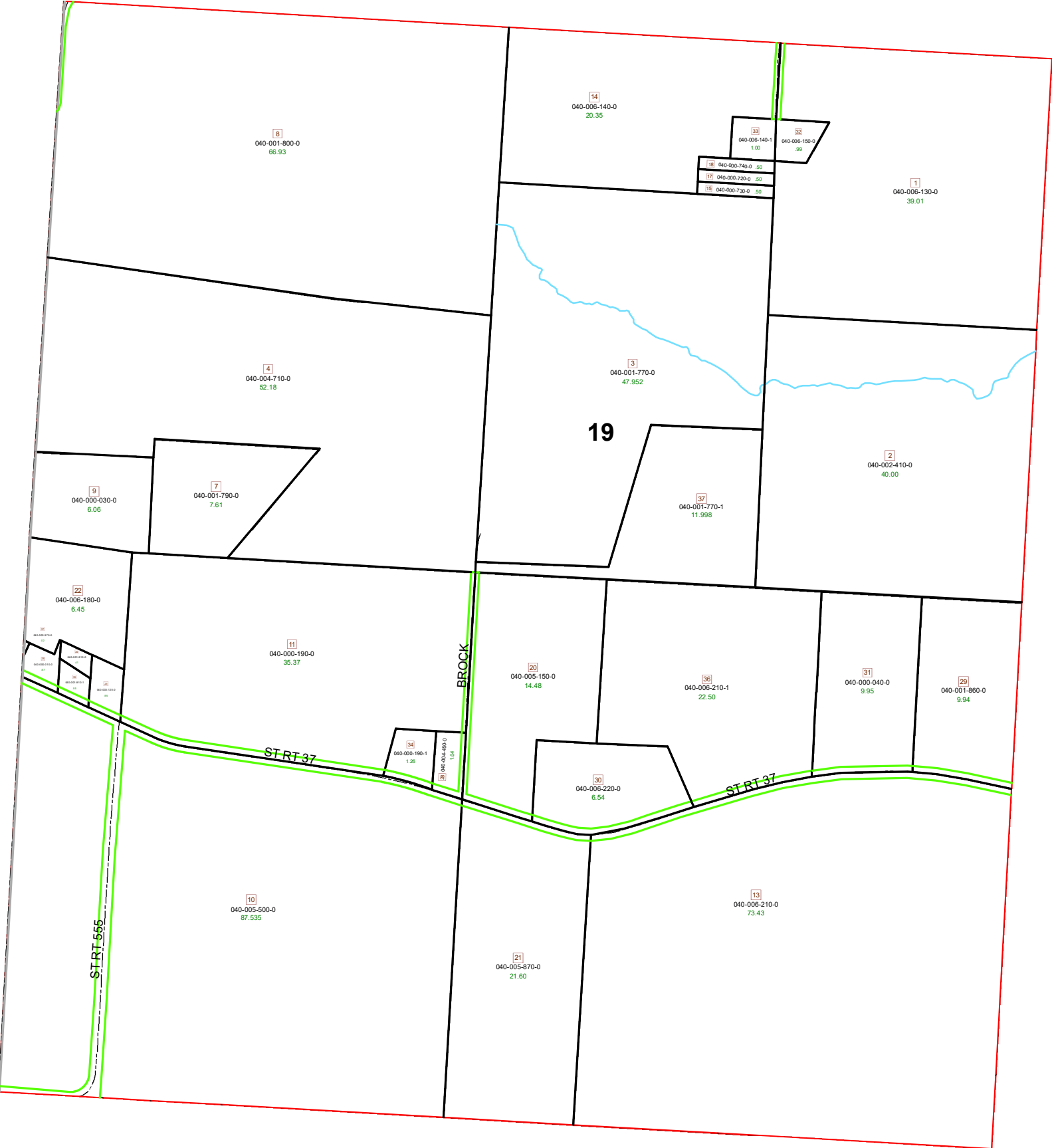


DEERFIELD TOWNSHIP SECTION 19 R13- TWP 9 MORGAN COUNTY, OH



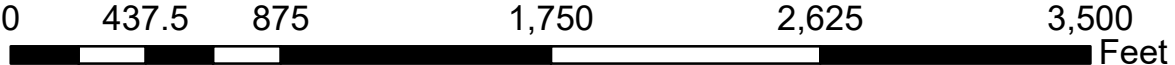
PIN	VOL	PAGE	Owner	LegalDescr	Acres
040-001-910-0	OR226	1048	ALTIER BENJAMIN & JUDY	R13 T09 S19 SD 24 S	0.41
040-000-010-0	OR225	814	BLEVINS JAY II & MICHELLE L	R13 T09 S19 S D 26	0.67
040-000-030-0	OR163	696	BOLYARD DOUGLAS R & JACQUELIN	R13 T09 S19 SD 9 EX	6.061
040-001-770-0	OR230	2922	CARPENTER TYLER & MCKAYLA	R13 T09 S19 SD 3 SU	47.952
040-001-800-0	OR164	377	CORNINELL WALTER A & LORRAINE S	R13 T09 S19 SD 8	66.93
040-002-410-0	OR212	1179	ENDSLEY HUGH E & JOELLE R	R13 T09 S19 SD 2 SU	40
040-000-730-0	OR226	3086	GEM BLUE LLC	R13 T09 S19 SD 15 E	0.5
040-000-720-0	OR226	3086	GEM BLUE LLC	R13 T09 S19 SD 17 E	0.5
040-000-740-0	OR226	3086	GEM BLUE LLC	R13 T09 S19 SD 18 E	0.5
040-005-870-0	OR205	3467	GILLETTE MARY ELLEN TRUSTEE	R13 T09 S19 SD 21 E	21.6
040-000-040-0	OR9	91	HAMBEL JOHNNY & BARBARA	R13 T09 S19 SD 31	9.95
040-005-150-0	OR194	315	HINKLE ELLEN K TRUSTEE	R13 T09 S19 SD 20	14.48
040-001-860-0	OR228	3411	HOUSEHOLDER DUSTIN D & JANET M	R13 T09 S19 SD 29 E	9.942
040-004-710-0	OR217	2081	JOHNSON MICHAEL A	R13 T09 S19 SD 6	52.183
040-003-120-0	OR216	2432	MAYNARD BILLY M SR & REBA J	R13 T09 S19 SD 23 E	0.95
040-003-370-0	D.V 150	543	MCGILL CHARLES S & SUE DIANE	R13 T09 S19 SD 27	0.02
040-000-190-0	OR217	2081	PACE EARL ELLIOTT & JOAN THERES	R13 T09 S19 SD 11 E	35.365
040-006-220-0	OR226	2219	PIERCE JASON D & AMANDA L	R13 T09 S19 SD 30 S	6.54
040-006-210-1	OR226	2219	PIERCE JASON D & AMANDA L	R13 T09 S19 SD 36 S	22.5
040-001-770-1	OR230	2924	PIERCE JASON D & AMANDA L	R13/T9/S19 SD37	11.998
040-001-910-1	OR216	696	PORT-37 LLC	R13 T09 S19 SD 35	0.55
040-000-190-1	D.V 200	50	PORTERSVILLE EAST BRANCH WATE	R13 T09 S19 SD 34	1.26
040-004-450-0	OR205	1777	SANTOY HOLINESS CHAPEL	R13 T09 S19 SD 28	1.04
040-005-500-0	OR234	244	SMITH CHRISTOPHER A & REBECCA L	R13 T09 S19 SD 10	87.535
040-006-130-0	OR148	109	WAINWRIGHT JOANN TOD-KATHRYN	R13 T09 S19 SD 1	39.01
040-006-140-0	OR148	109	WAINWRIGHT JOANN TOD-KATHRYN	R13 T09 S19 SD 14	20.35
040-006-150-0	D.V 159	656	WAINWRIGHT LARRY	R13 T09 S19 SD 32	0.99
040-006-140-1	D.V 190	193	WAINWRIGHT LARRY H	R13 T09 S19 SD 33	1
040-006-180-0	OR78	4	WATTS ROBERT & RUTH ANN TRUST	R13 T09 S19 SD 22	6.45
040-006-210-0	OR232	1646	WEBB VERNIE F	R13 T09 S19 SD 13	74.43
040-001-790-0	OR176	721	WILSON TONI L	R13 T09 S19 SD 7	7.61

Boundaries

- - - - - Future Split
- Parcel
- Hydro
- ROW
- Section
- Lot
- - - - - Township
- - - - - Roads

Type

- - - - - County



Disclaimer: The information that these maps contains is for reference purposes only. Please bring any erros to the attention of the Engineer's Office staff.
Thank you